

PART OF NE 1/4, SEC. 32, T.7N., R.2W., S.L.B. & M.

PLAIN CITY  
BLOCK 16, PLAT A

TAXING UNIT: 21, 434

SCALE 1" = 50'

SEE PAGE 45

(21)

2650 NORTH STREET

WEST STREET

WEST STREET

SEE BOOK 19  
PAGE 31

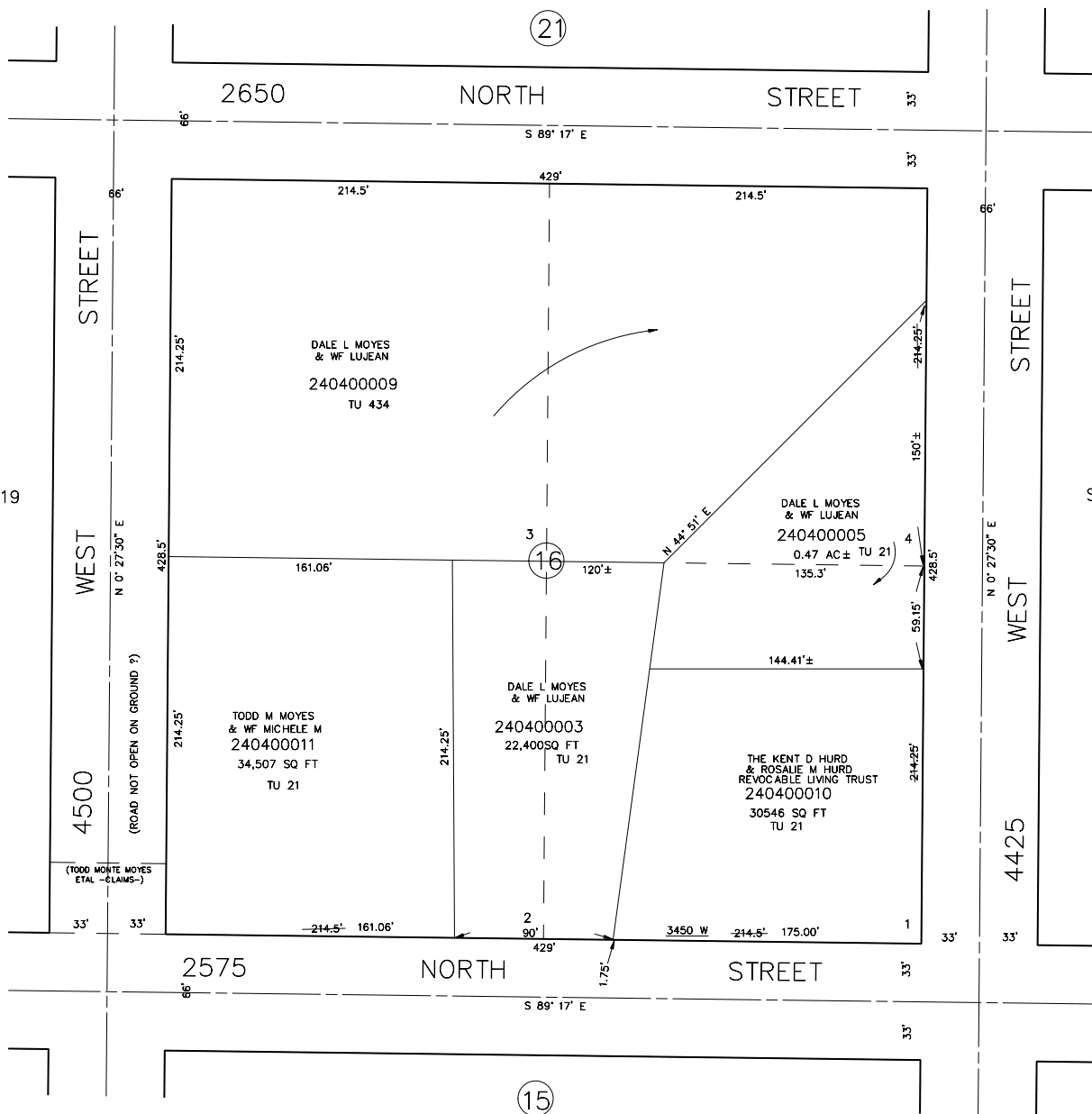
SEE PAGE 41

4500 WEST STREET  
(ROAD NOT OPEN ON GROUND ?)

4425 WEST STREET

(17)

(TODD MOYES & ROSALIE M HURD  
ETAL - CLAIMS-)



SEE PAGE 39

SEE ORIGINAL DEDICATION  
PLAT OF PLAIN CITY IN  
BOOK 5, PAGE 80 OF RECORDS.